

# *The Philosophy of Narnia*

by

Samantha Upiter

# Samantha Upiter

☐ Hi, my name is Samantha. You can call me Sam!



☐ I am a big fan of **NARNIA** by C.S. Lewis!

# C.S. Lewis (1898 – 1963)



- ❑ C.S. Lewis was an Oxford Don and the subject of the bio pic *Shadowlands* starring Anthony Hopkins.
- ❑ He was a devout Christian, an Anglican. His friend J.R.R. Tolkien was a Catholic.
- ❑ Late in life, he married the younger American writer Joy Davidman.

# Shadowlands Film Poster



# The Chronicles of Narnia

- ❑ Lewis published the **Narnia** series between 1950 – 1956.
- ❑ I **LOVE** the film version of Narnia because it is the classic struggle between good and evil.



- ❑ Evil is represented by the **Queen of Narnia** (the White Witch).
- ❑ Good is represented by the mystical lion **Aslan**.

# Narnia Film Poster



# Queen of Narnia (the White Witch)



# Aslan





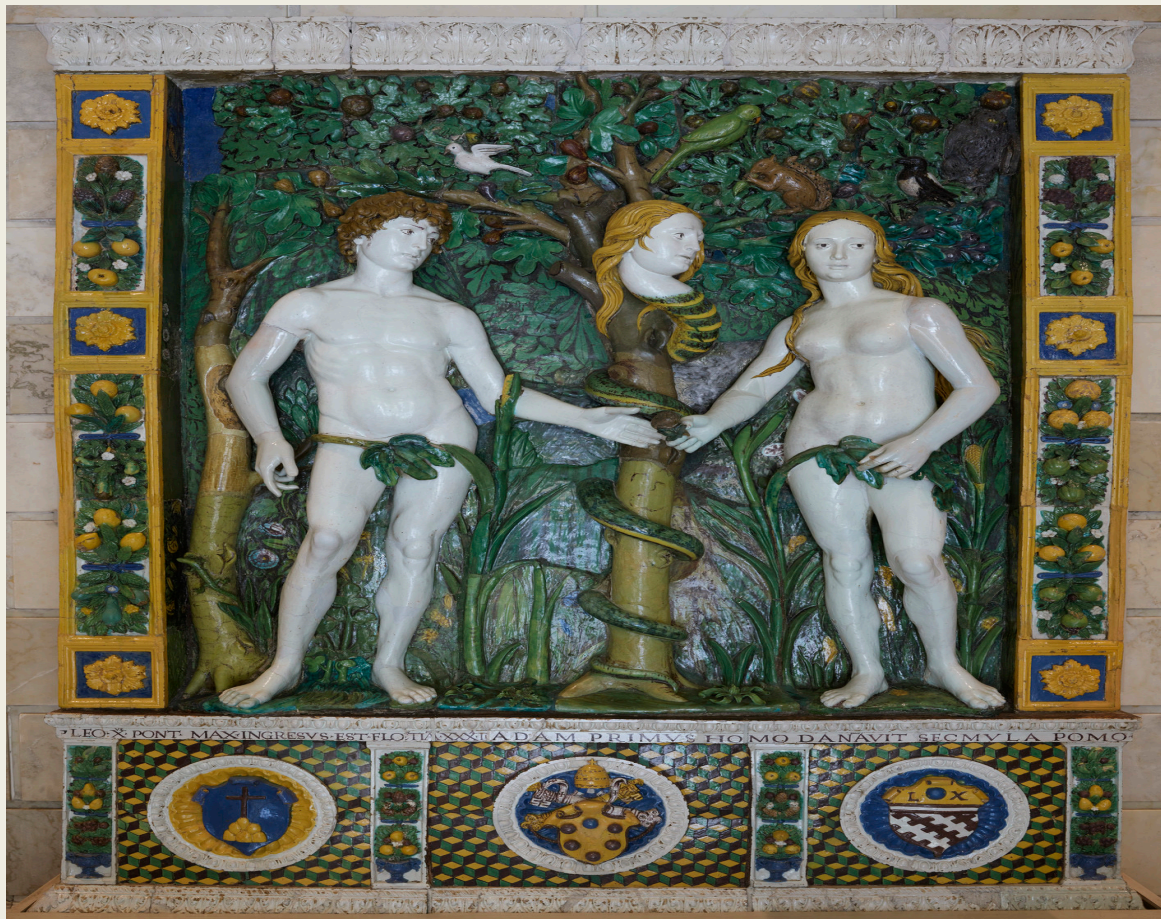
# Myth, Legend & Religion

- ❑ Narnia is presented in mythical or fantasy form, similar to Tolkein's *Lord of the Rings*.
- ❑ However, underlying it all is a very **Christian** message.



# Why is the Battle so Fierce?

- Perhaps this is the price we pay (punishment if you will) for our sins?



# Narnia and the Contemporary World

- ❑ Unfortunately, Narnia seems to describe our contemporary world crisis very well indeed.



- ❑ We can only hope that **Good** will eventually triumph over **Evil** - in reality - as it does in the film!

**THANKS FOR  
WATCHING!**